

# IDAHO PARTNERSHIP FOR HISPANIC HEALTH



## INDIVIDUAL SURVEY QUESTIONNAIRE REPORT: PRIMARY DATA ANALYSIS

This publication was supported by Grant No. 5 R24 MD001711-02  
from the National Center on Minority Health and Health Disparities  
within the National Institutes of Health.

Linda Powell, MS, CPT  
Mountain States Group, Inc.

## IDAHO PARTNERSHIP FOR HISPANIC HEALTH INDIVIDUAL SURVEY QUESTIONNAIRE REPORT: PRIMARY DATA ANALYSIS

A total of 519 individual interviews were completed from June 21, 2006 through August 4, 2006. Four other records were eliminated from the data because they were dated prior to the start of the actual interviews (2 records) or were missing significant pieces of data (2 records). Of these 320 or 61.7% were female, and 199 or 38.3% were male. The survey methodology was based on identifying Census Tracts with a greater percentage of Hispanics in each of the ten counties comprising two health districts. Two counties were eliminated (Valley and Adams) because the percentage of Hispanics was too small, leaving the survey area consisting of the 8 counties. From that point, the Core Team determined a need for at least 215 interviews in each of the two health districts or 430 total. The Core Team decided to increase the number of interviews in the more rural communities to better represent their concerns. The following table is a listing of the counties, the number of interviews that were targeted, and the actual number of respondents by county.

<b>County</b>	<b># Respondents</b>	<b>Percent of Total</b>	<b>Target</b>
<b>Ada</b>	<b>84</b>	<b>16.2%</b>	<b>80</b>
<b>Boise</b>	<b>2</b>	<b>0.4%</b>	<b>25</b>
<b>Canyon</b>	<b>169</b>	<b>32.6%</b>	<b>150</b>
<b>Elmore</b>	<b>73</b>	<b>14.1%</b>	<b>70</b>
<b>Gem</b>	<b>27</b>	<b>5.2%</b>	<b>25</b>
<b>Owyhee</b>	<b>60</b>	<b>11.6%</b>	<b>60</b>
<b>Payette</b>	<b>63</b>	<b>12.1%</b>	<b>60</b>
<b>Washington</b>	<b>41</b>	<b>7.9%</b>	<b>40</b>
<b>Total</b>	<b>519</b>	<b>100.10%</b>	<b>510</b>

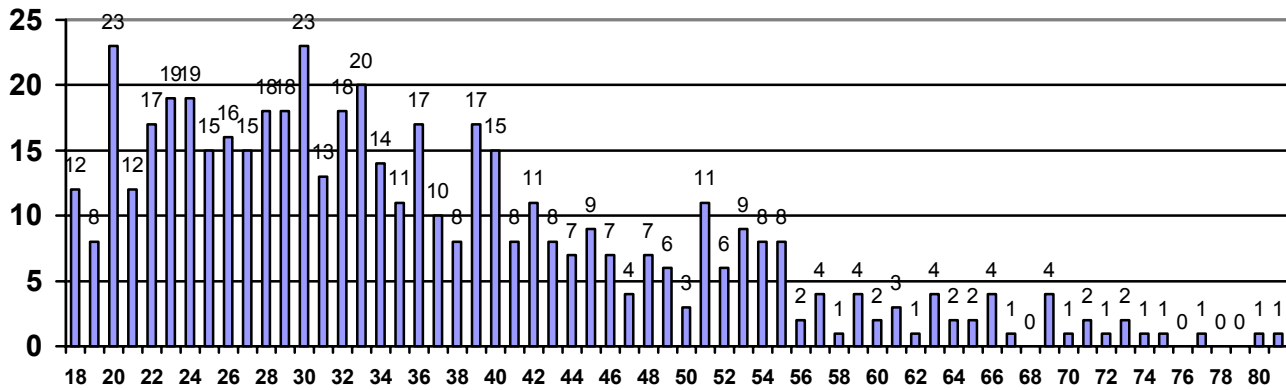
The following section provides the actual data for each of the questions asked.

### PRIMARY DATA ANALYSIS

1. How old are you? (enter in years)

Of the total 519 respondents, only 4 didn't supply their age. The remaining ages are distributed in the chart below.

### Age Distribution of all Respondents



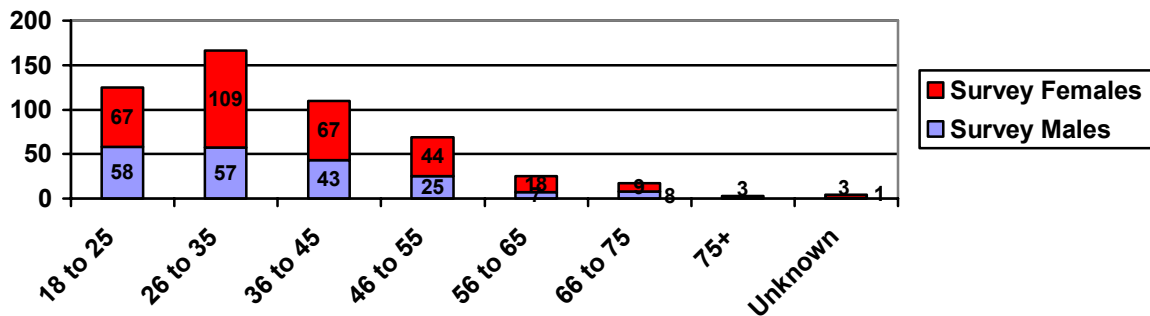
The vast majority (70%) of respondents were age 40 and under. Only 34 were 60 and older (7%) and the remaining 23% were between 41 and 59 years of age.

### 2. What is your sex?

Close to 62% of respondents were female (320) and 38% were males (199). The following table and the chart below show the distribution of respondent sex by age groups.

Age	Survey Males	Survey Females
18 to 25	58	67
26 to 35	57	109
36 to 45	43	67
46 to 55	25	44
56 to 65	7	18
66 to 75	8	9
75+	0	3
Unknown	1	3
Totals	199	320

### Age/Sex Distribution



3. What is your race?

The vast majority of respondents (89%) selected “Other” as their race. The table below is a distribution of respondent selections.

Race	# Respondents
American Indian/Alaska Native	5
Asian	1
Native Hawaiian or Other Pacific Islander	0
Black or African American	0
White	17
More than one race	16
Don't know/not sure	17
Other	463
Totals	519

4. Do you consider yourself to be Hispanic/Latino?

Only two out of the 519 responded negatively to this question, one male, one female, even though they initially identified themselves as Latino when initial contact was made. The remaining 517 considered themselves to be Hispanic or Latino.

5. What county do you live in?

The following table is a distribution of the number and percent of respondents by county. Roughly one-third were from Canyon County.

County	# Respondents	Percent of Total
Ada	84	16.2%
Boise	2	0.4%
Canyon	169	32.6%
Elmore	73	14.1%
Gem	27	5.2%
Owyhee	60	11.6%
Payette	63	12.1%
Washington	41	7.9%
Total	519	100.10%

6. Where were you born?

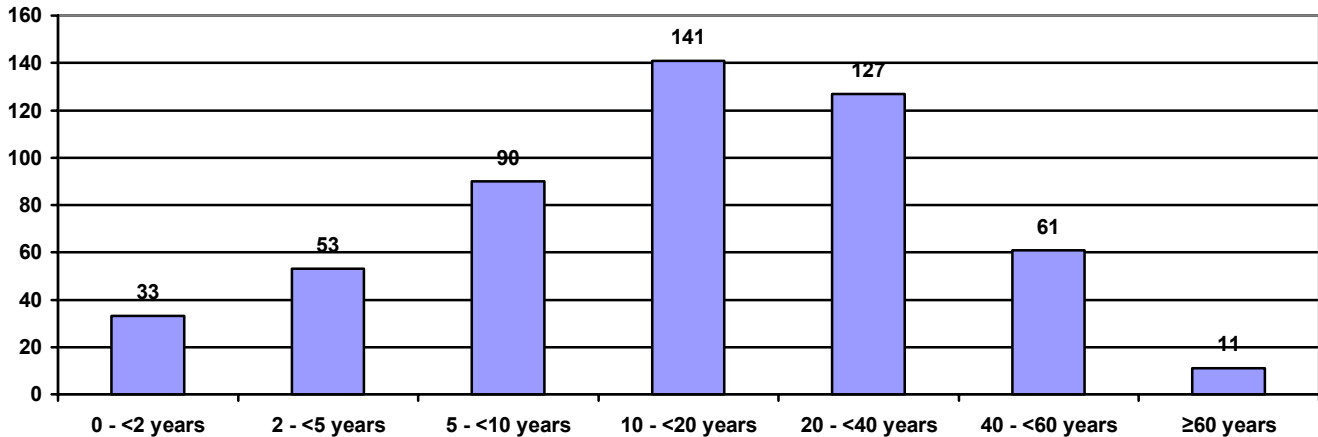
Close to 70% of respondents were born in Mexico with another 28% born in the United States. The following table is a distribution of respondents by country of birth.

Country of Birth	# Respondents
United States	145
Mexico	361
Puerto Rico	3
Cuba	0
Central America	7
South America	3
Total	519

7. How many years have you lived in the U.S.?

The following chart is a distribution of responses by years lived in the U.S aggregated. The table below is a distribution of responses by years not aggregated. Slightly over one-third have lived in the U.S. less than ten years (33.9%). Another 27% have lived in the U.S. from 10 to less than 20 years; 24.5% lived in U.S. 20 to less than 40 years; and the remaining 14% have lived in the U.S. greater than 40 years.

**Distribution of Years in US of all Respondents**



# Years	# Responses
< 1	1
1-1.5	32
2-2.5	20
3	15
4	18
5	24
6	29
7	22
8-8.5	8
9	7
10	16
11	13

12	10
13	12
14	25
15	14
16	19
17	9
18	18
19	5
20	20
21	7
22	4
23	10
24	9

25	4
26	10
27	3
28	5
29	4
30	12
31	5
32	5
33	6
34	6
35	3
36	3
37	4

38	2
39	5
40	3
42	8
44	4
45	6
47	1
48	2
49	4
50	3
51	7

52	2
53	5
54	5
55	5
57	3
58	1
59	2
60	2
62	1
65	1
66	2

67	1
73	1
75	1
77	1
80	1
81	1
Totals	518

8. What is your marital status?

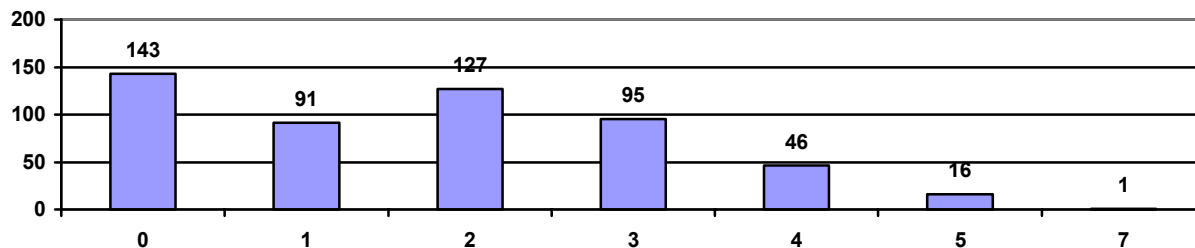
The following chart is a distribution of responses by marital status. Close to 65% of respondents are married, followed by 17% who were reportedly single and never married, and 9% reportedly a member of an unmarried couple.

Marital Status	# Respondents
Single, never married	86
Single, divorced	25
Married	334
Widowed	11
Separated	16
A member of an unmarried couple	46
Totals	518

9. How many children less than 18 years live in your household?

Close to 28% or 143 reported no children under 18 living in their household. Roughly one-fourth (127) reported 2 children. The following chart is a distribution of the responses by number of children in household.

**Number of Children in Household <18**



10. Are any of those children disabled or incapacitated?

Three percent (16) of respondents indicated that they had children under 18 in their household that were either disabled or incapacitated.

Disabled/Incapacitated Children	# Respondents
Yes	16
No	356
Don't know/unsure	4
No Answer	143

11. What is your primary language?

Three quarters (75%) stated their primary language was Spanish with remaining primarily English.

Primary Language	# Respondents
English	123
Spanish	387
Other	8
Don't know/not sure	1
Total	519

12. Do you read English?

Close to 40% (206) of respondents don't read English and another 21% only read English a little bit.

Read English	# Respondents
A little bit	107
Yes	204
No	206
Don't know/not sure	2
Totals	519

13. Do you write English?

Close to 49% (254) of respondents don't write English and another 15% only write English a little bit.

Write English	# Respondents
A little bit	76
Yes	188
No	254
Don't know/not sure	1
Totals	519

14. How many years of education have you completed?

Roughly 40% (208) of respondents have a sixth grade education or less. Twenty-three percent (23%) have some high school; 22% have graduated high school or have a GED; 2% have vocational/technical school training; 11% have some college or university, and only 2% have graduated from a college/university.

Education	# Respondents
Did not attend school	16
Less than sixth grade	96
Through sixth grade	96
Some high school	120
High school graduate or GED	114
Vocational/technical school	9
Some college or university	56
College/university graduate	12
Totals	519

15. What is your current work status?

Roughly 61% (318) of respondents are employed for wages. Twenty-two percent (22%) are homemakers; 4% are self-employed, 4% unable to work, 3% retired, 2% out of work more than a year, 2% out of work less than a year, and only 1% were students.

Work Status	# Respondents
Employed for wages	318
Self-employed	19
Out of work for more than 1 year	11
Out of work for less than 1 year	12
A homemaker	112
A student	5
A student and working	2
Retired	17
Unable to work	21
Don't know/not sure/refused	2
Totals	519

16. (if employed) What type of work do you do?

Agriculture, service and construction topped the list of most frequently selected work types. The following table is a distribution of all respondents by type of work. Note: these include responses from those who may have selected other categories in addition to “employed for wages” in the above question.

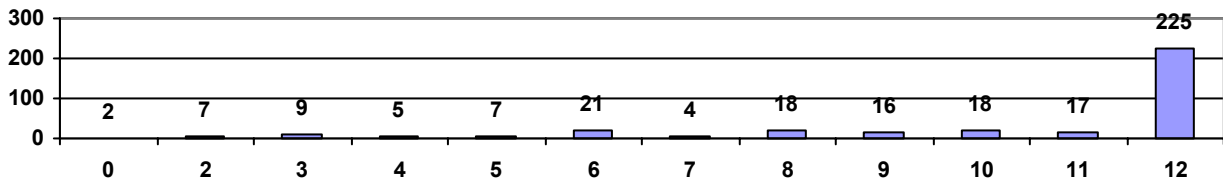
Type of Work	# Respondents
Administration	14
Agriculture (farming, dairy, ranching)	80
Armed Forces (military)	1
Construction (drywall, framer, concrete)	59
Installation (insulation, carpet, plumbing, electrical)	15
Landscaping (nursery, gardener)	2
Management	6
Meatcutter	3
Production (manufacturing, printing, woodworking, fabrication)	40
Professional-non healthcare (lawyer, teacher, accountant, computer specialist, engineer)	19
Professional-healthcare (doctor, nurse, therapist, counselor, other allied health)	6
Sales (retail, real estate, insurance, other)	2
Service (waiter, chef, housekeeping, janitorial, daycare)	74
Transportation (cab/truck driver, pilot, gas station, railroad, conveyor)	6
Other (all others)	22
Total	349

17. How many months do you work in a year? (enter number of months)

Close to 65% of respondents work 12 months during the year. The table below is a distribution of respondents by months worked. The chart below also displays this data.

Months Worked	# Respondents
0	2
2	7
3	9
4	5
5	7
6	21
7	4
8	18
9	16
10	18
11	17
12	225
Total	349

Months Worked in a Year



18. What is your monthly household income from all sources?

Of those that did respond (451), 24% reported a monthly income of \$1,000 to \$1,499, 18% reported monthly incomes of under \$1,000, and only 3% reported incomes greater than \$5,000 a month. The table below is a distribution of responses by monthly income.

Monthly Income	# Respondents
Less than \$500	10
\$500-\$999	72
\$1,000-\$1,499	106
\$1,500-\$1,999	85
\$2,000-\$2,999	89
\$3,000-\$4,999	75
Greater than \$5,000	14
Don't know/not sure	58
Refused	7
Total	516

19. Do you have any kind of health care coverage or insurance?

Over 62% of respondents don't have health care coverage or insurance.

Health Insurance	# Respondents
Yes	195
No	323
Don't know/not sure	1
Total	519

20. If no to question 19, what is the main reason you are without health care coverage?

Seventy-nine individuals selected more than one reason. The following table is a distribution of all responses including multiple selections. The most frequently selected reasons was they didn't have money to pay for health coverage (155) followed by employer doesn't offer or stopped offering coverage (97) and other (76).

Reason without Health Care Coverage	# Responses
Became divorced or separated	1
Became ineligible because of age or because left school	6
Benefits from employer or former employer ran out	5
Cutback to part time or became temporary employee	14
Didn't have money to pay	155
Don't need it	21
Employer doesn't offer or stopped offering coverage	97
Insurance company refused coverage	6
Lost job or changed employers	20
Lost Medicaid or Medical Assistance eligibility	5
Spouse or parent lost job or changed employers	3
Spouse or parent died	0
Other	76
Don't know/not sure	6

21. Do you have any kind of dental care coverage or insurance?

Seventy-two percent (72%) don't have dental coverage and 26% reportedly do have dental coverage.

Dental Coverage	# Respondents
Yes	136
No	376
Don't know/not sure	5
Refused/no answer	2
Total	519

22. Do you have a place where you routinely go to for health care?

Close to 57% of respondents have one place where they routinely go for health care; another 13% have more than one place; and 30% have no medical home.

Medical Home	# Respondents
Yes, only one	295
Yes, more than one	66
No	157
Refused	0
Total	518

23. Was there a time in the past 12 months when you needed to see a doctor but could not because of the cost?

Close to 32% of respondents reported they needed to see a doctor but couldn't because of the cost.

Cost Barriers	# Respondents
Yes	164
No	353
Don't know/not sure	1
Refused	0
Total	518

24. When you are sick, who/where do you usually go to for help?

Four hundred ninety-four respondents replied to this question, many had multiple selections. Clinic or health center was selected as the source people usually go for help when sick three hundred seventy-seven (377) times by respondents. Seventy-seven (77) selected doctors office or other health plan; 73 selected hospital emergency room; and 70 selected family/friend/neighbor.

Source of Assistance	# Responses
Books/magazines	16
Clinic or health center	377
Counselor	8
Curandero/espiritista/santero	4
Doctors office or another health plan	77
Family/friend/neighbor	70
Hospital emergency room	73
Hospital outpatient department	24
Internet	11
Nurses	16
Pharmacist	56
Social service agency	2
Television or radio	4
Other	30
Don't know/not sure	4

25. Have you ever had difficulty getting needed health services?

Twenty-two percent (22%) of respondents reported they had difficulty getting needed health services.

Difficulty Getting Services	# Respondents
Yes	116
No	398
Don't know/not sure	5
Total	519

26. Which of the following are problems for you in getting needed health services?

One hundred twenty-one respondents provided responses to this question. The most frequently cited problems in getting needed health services were the cost of services too high (87) followed by not having health insurance (49).

Problems	# Responses
Cost of services too high	87
Hours not convenient	21
I am not sure that the services will help my problem	20
I am not sure what services are available to me	19
I do not have health insurance	49
I do not know where to go	15
I do not like doctors	5
I prefer to take care of my own problems at home	15
I wait too long for an appointment	38
Provider does not speak Spanish	28
Transportation	16
Other	14
Don't know/not sure	1

27. During the past 12 months, could you **not afford** any of the following?

The most frequently cited service respondents couldn't afford were dental care (179) followed by eyeglasses (103) and prescription medications (78).

Can Not Afford	# Responses
Dental care (including check-ups)	179
Eyeglasses	103
Hospice care	8
Mental health care or counseling	16
Prescription medications	78
Don't know/not sure	24

28. When was the last time you visited a dentist or a dental clinic for any reason?

Roughly 39% had visited a dentist within the past year; 18% between 1 and 2 years; 20% between 2 and 5 years; and 17% more than 5 years. Five percent (5.6%) reported never visiting a dentist.

Dental Visit	# Respondents
Never	29
Less than 1 year	202
More than a year but less than 2 years	94
More than two years but less than 5 years	105
More than 5 years	87
Don't know/not sure	2
Total	519

29. When was the last time you had your teeth cleaned by a dentist or dental hygienist?

Over 14% have never had their teeth cleaned; 33% had them cleaned within the past year; 16% between 1 and 2 years; 18% between 2 and 5 years; and another 18% more than 5 years ago.

Dental Visit	# Respondents
Never	75
Less than 1 year	171
More than a year but less than 2 years	82
More than two years but less than 5 years	92
More than 5 years	95
Don't know/not sure	4
Total	519

30. During the past 12 months have you seen or talked to any of the following about your own health?

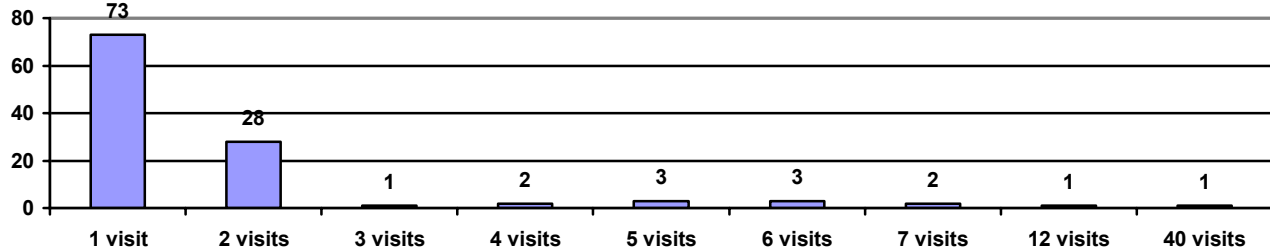
Thirty-seven percent (37%) saw a family or general physicians during the past year; followed by another 26% who saw a doctor or nurse who specializes in women's health.

Provider Types	# Responses
Chiropractor	46
Doctor or nurse who specializes in women's health (obstetrician/gynecologist, midwife)	136
Family or general physician	193
Foot doctor (podiatrist)	30
Nurse practitioner or physician assistant	64
Optometrist, ophthalmologist, or eye doctor (someone who prescribes eyeglasses)	69
Other medical doctor who specializes in a particular medical disease or problem	40
Physical therapist, speech therapist, respiratory therapist, audiologist, or occupational therapist	23
Psychiatrist, psychologist, psychiatric nurse, clinical social worker	14
Traditional healer (Curandero, espiritista, santero, sobadera)	8
Don't know/not sure	16
Refused	1

31. During the past 12 months how many times have you gone to a hospital emergency room about your own health (this includes emergency room visits that resulted in a hospital admission)?

Four hundred respondents never visited an emergency room over the past year. Of the 114 that did, they had a total 239 visits. The following chart distributes the visits to the ER.

### Annual Visits to ER



32. During the past 12 months did you receive at home care from a nurse or other healthcare professional?

Less than 2% received home care from a nurse or other healthcare professional.

Home Care	# Respondents
Yes	10
No	505
Don't know/unsure	2
Total	517

33. During the past 12 months, have you had surgery or other surgical procedures either as an inpatient or outpatient? (select from list)

Nine percent (9%) reported a surgery or other surgical procedure during the past 12 months.

Surgery	# Respondents
Yes	47
No	466
Don't know/unsure	4
Total	517

34. About how long has it been since you last saw or talked to a doctor or other healthcare professional about your own health? Include doctors seen while a patient in a hospital.

Slightly less than 4% have never seen or talked to a doctor or other healthcare professional about their health. Close to 62% have done so within the past year; 13% between 1 and 2 years; 12% between 2 and 5 years; and almost 9% more than 5 years.

Last Seen Provider	# Respondents
Never	19
Less than 1 year	320
More than a year but less than 2 years	70
More than two years but less than 5 years	62
More than 5 years	46
Don't know/not sure	2
Total	519

35. How would you rate your satisfaction with your overall health care?

Roughly three quarters (74%) rated their satisfaction as excellent or good. Close to 17% rated their satisfaction as fair and another 5% rated it poor.

Satisfaction with Healthcare	# Respondents
Excellent	80
Good	304
Fair	89
Poor	26
Not applicable/don't use any health services	16
Don't know/not sure	4
Total	519

36. Would you say that in general your health is:

Sixty-five percent (65%) rated their health as excellent or good. Another quarter (25.2%) rated their health as fair and 9% rated their health as poor.

Health Rating	# Respondents
Excellent	64
Good	274
Fair	131
Poor	48
Don't know/not sure	2
Total	519

37. Compared with 12 months ago, would you say your health is better, worse, or about the same?

Slightly more than 63% reported their health is about the same; 22% reported it was better and 15% reported it was worse.

Health Changes	# Respondents
Better	114
Worse	77
About the same	328
Total	519

38. About how much do you weigh?

Four hundred forty-nine respondents provided their weight ranging from 80 to 375 pounds. The average weight was 169 pounds.

39. Do you believe your weight impacts your health in a negative way?

Close to 55% did not believe their weight impacts their health in a negative way while 39% did.

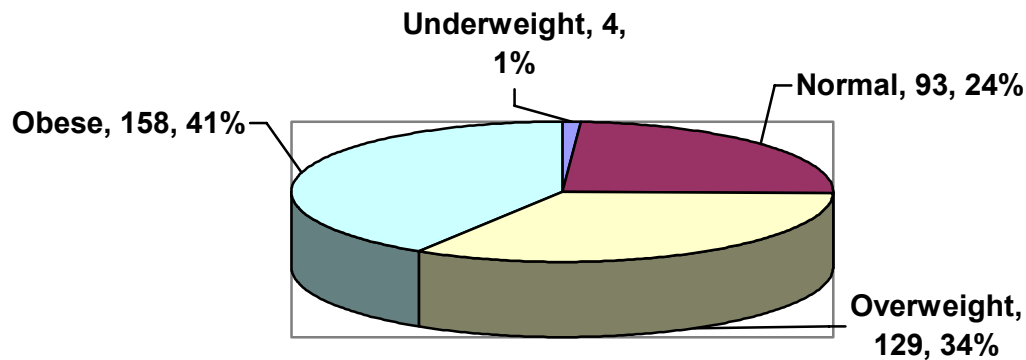
Weight Impacts Health	# Respondents
Yes	205
No	283
Don't know/unsure	17
Refused	1
Total	506

40. About how tall are you?

Four hundred seventeen respondents provided their height. The range of heights was 3 feet 7 inches to 6 feet 4 inches. The average height was 5 feet 4 inches.

BMIs (Body Mass Index) were calculated for those respondents who provided both height and weight or 384 individuals. The following chart displays those values. Only 1% were underweight, 24% were normal, 34% were overweight, and 41% were obese.

**BMIs of 384 Respondents**



41. Have you ever been told by a doctor or other healthcare professional that you have any of the following conditions and if so, how long have you had this condition?

The most frequently cited condition was hypertension, followed by allergies and diabetes. The table below are responses by condition along with what percent of total respondents this represents.

Condition	# Responses	% of Total	Average # Years
Hypertension (also called high blood pressure)	81	15.6	6.4
Coronary heart disease	8	1.5	3.5
Angina (also called angina pectoris or chest pain)	9	1.7	5.9
Heart attack (also called myocardial infarction)	4	.7	3.8
Any other kind of heart condition or heart disease	18	3.5	8.2
Stroke	4	.7	4.8
Emphysema	2	.4	5.0
Asthma	27	5.2	13.9
Hay fever	24	4.6	13.2
Allergies	65	12.5	11.2
Sinusitis	29	5.6	8.9
Chronic bronchitis	21	4.0	15.1
Ulcer (stomach, duodenal, peptic)	23	4.4	9.7
Breast cancer	1	.2	2
Prostate cancer	0	0	0
Other cancer or malignancy	5	1.0	8.6
Diabetes (sugar in blood)	60	11.6	7.0
Weak or failing kidneys	23	4.4	8.7
Liver condition	16	3.1	2.4
Glaucoma	8	1.5	4.9

42. Are you now using insulin?

22% of respondents are now using insulin.

Use Insulin	# Respondents
Yes	13
No	47
Don't know/unsure	0
Total	60

43. Are you now taking diabetic pills?

52% of respondents are taking diabetic pills. That leaves 16 respondents that aren't taking anything.

Take Pills	# Respondents
Yes	31
No	28
Don't know/unsure	1
Total	60

44. How many times a day do you check your blood for glucose or sugar? Include times when checked by a family member or friend, but do not include times when checked by a health professional.

Roughly 47% don't check their blood at all (28). The following table contains responses by times per day they check their blood.

# Times/Day	# Respondents
0	28
1	12
2	13
3	4
4	1
6	1
7	1

45. Have you ever heard about a test called "A one C" which measures the average level of blood sugar over the past three months?

Seventy-five percent (75%) have not heard of an A1C test.

Heard of A1C	# Respondents
Yes	14
No	45
Don't know/unsure	1
Total	60

46. About how many times in the past 12 months has a doctor, nurse, or other health professional checked you for "A one C"? A test for hemoglobin "A one C" measures the average level of blood sugar over the past three months.

Only fourteen or 23% had a check for A one C. The following table contains the distribution of respondents by times checked in the past year.

# Times/Year	# Respondents
1	1
2	2
3	4
4	7

47. When was the last time you had an eye exam in which the pupils were dilated? This would have made you temporarily sensitive to bright light.

Twenty-two percent (22%) never had an eye exam with pupils dilated and another 43% had it done within the past year.

Eye Exam	# Respondents
Never	13
Less than 1 year	26
More than a year but less than 2 years	4
More than two years but less than 5 years	9
More than 5 years	8
Total	60

48. Have you ever taken a course or class in how to manage your diabetes yourself?

Roughly 55% have taken a course or class in self-management; the remaining 45% have not.

Self-Management	# Respondents
Yes	33
No	27
Total	60

49. How many times in one week do you check your feet for any sores or irritations? Include times when checked by a family member or friend, but do not include times when checked by a health professional.

Thirty-five percent (35%) never check their feet for sores or irritations. The following table contains the distribution of respondents by times checked in a week. Thirty percent (30%) check their feet 7 times per week.

# Times/Week	# Respondents
0	21
1	6
2	2
3	6
4	3
5	2
7	18
8	1
14	1

50. Have you or your spouse/partner been pregnant in the last 5 years?

Close to 42% of respondents reported a pregnancy in the last 5 years.

Pregnant	# Respondents
Yes	217
No	290
Don't know/unsure	2
Total	509

51. Did you receive prenatal care within the first three months of the pregnancy? (select from list)

Ninety percent (90% ) of those reporting a pregnancy did receive prenatal care within the first three months of the pregnancy.

Prenatal Care	# Respondents
Yes	196
No	21
Total	217

52. Why didn't you receive prenatal care?

The primary reason for not receiving prenatal care was because they couldn't afford it; followed by other. The table below contains the responses by reason.

Reasons for Not Receiving Care	# Responses
Couldn't afford it	8
Didn't know where to go	3
Don't trust doctors/nurses	2
Didn't feel it was necessary	1
Tried but was refused	3
Other	6

53. Have you ever had your hearing tested?

Fifty-five percent (55%) have not ever had their hearing tested.

Hearing Test	# Respondents
Yes	230
No	286
Don't know/unsure	3
Total	519

54. Which of the following best describes your hearing without a hearing aid:

Close to 83% of respondents describe their hearing as good; 16% have a little difficulty hearing; and 1.1% have a lot of difficulty hearing but no one selected deaf.

Hearing Status	# Respondents
Good	429
A little difficulty	82
A lot of difficulty	6
Deaf	0
Don't know/not sure	1
Refused	0
Total	518

55. When was the last time you had your vision tested?

Over 26% have never had their vision tested; another 28% have had their vision tested within one year; and close to 15% haven't had their vision tested under 5 years ago.

Vision Tested	# Respondents
Never	139
Less than 1 year	145
More than a year but less than 2 years	61
More than two years but less than 5 years	93
More than 5 years	76
Don't know/not sure	4
Refused	0
Total	518

56. During the past year, have you been diagnosed with depression by a health care professional?

Thirteen percent (13.1%) had been diagnosed with depression by a healthcare professional during the past year.

Depression	# Respondents
Yes	68
No	448
Don't know/unsure	1
Refused	0
Total	517

57. In Idaho, do you or someone in your immediate family have any of the following:

Slightly more than 22% reported depression in their immediate family; almost 8% reported another mental health issue; and 12.5% reported substance abuse problems.

Mental/Addictive Issues	# Respondents
Depression	118
Other mental health issues	40
Substance abuse problems (drug/alcohol)	65
None	351
Don't know/not sure	2

58. Do you now smoke cigarettes?

Seventy-eight percent (78%) reportedly don't smoke at all while 8.6% smoke everyday and 9% smoke some days.

Smoke	# Respondents
Everyday	45
Some days	47
Not at all	405
Don't know/not sure	21
Refused	1
Total	519

59. In the past week, not counting your normal daily activities, how many times did you exercise enough to break a sweat or breathe heavily? For example, walking, running, going to the gym, bicycling, etc.

Fifty-seven percent (57.4%) reported they did not exercise enough to break a sweat or breathe heavily. The table below is a distribution of responses by times per week of exercise. The average number of times per week of respondents who did exercise was close to 4 (3.89).

# Times/Week	# Respondents
0	298
1	25
2	49
3	43
4	22
5	19
6	13
7	46
14	1

60. During the past week, how many days per week did you have at least one drink of any alcoholic beverage? A drink of alcohol is 1 can or bottle of beer, 1 glass of wine, 1 can or bottle of wine cooler, 1 cocktail, or 1 shot of liquor.

Slightly more than 70% didn't have at least one drink of any alcoholic beverage during the past week. Five percent (5%) reported having at least one drink per day. The table below is a distribution of responses by days per week that 153 individuals said they had at least one drink.

# Days/Week	# Responses
0	366
1	75
2	24
3	18
4	5
5	2
6	2
7	27
Total	519

61. On the days when you drank, about how many drinks did you drink on average?

Fifty-eight percent (58.1%) of respondents had between 1 and 3 drinks per day. The overall average was 4.2 drinks per day.

# Drinks/Day	# Responses
0	3
1	33
2	32
3	24
4	11
5	10
6	12
7	1

# Drinks/Day	# Responses
8	7
9	1
10	8
12	4
15	1
18	2
20	1
24	1
Refused	1

62.

61. Considering all types of alcoholic beverages, how many times during the past 30 days did you have 5 or more drinks on an occasion?

Roughly 50% never had more than 5 drinks on an occasion during the past month. Another 17% reported this occurrence only once during a month.

Binges	# Responses
0	77
1	26
2	10
3	7
4	11
5	5
6	1
8	3
10	3
12	1
16	1
20	2
25	1
30	3
Refused	2

62. Have you ever received information on the dangers of pesticides?

Only 36% have ever received information on the dangers of pesticides.

Pesticide Information	# Respondents
Yes	189
No	330
Total	519

63. Are you familiar with the symptoms of pesticide over exposure?

Although only a third received information on the dangers, 42% reported they were familiar with the symptoms of pesticide over exposure.

Pesticide Symptoms	# Respondents
Yes	217
No	297
Don't know/unsure	5
Total	519

64. In the past 12 months, have you been told by a healthcare provider that you were made ill by pesticides?

Roughly 1% or 5 respondents reported they were made ill by pesticides.

Pesticide Illness	# Respondents
Yes	5
No	512
Don't know/unsure	2
Total	519

65. During the past 12 months, have you had a flu shot? A flu shot is usually given in the fall and protects against influenza for the flu season.

Only 17% reported they had a flu shot during the past 12 months.

Flu Shot	# Respondents
Yes	90
No	428
Refused	1
Total	519

66. Have you ever had a pneumonia shot? This shot is usually given only once or twice in a person's lifetime and is different from the flu shot. It is also called the pneumococcal vaccine.

Only 8% reported they ever had a pneumonia shot and another 5% were not sure.

Pneumonia Shot	# Respondents
Yes	43
No	452
Don't know/unsure	24
Total	519

67. Have you ever had a mammogram? A mammogram is an x-ray of each breast to look for breast cancer.

Roughly one-third have had a mammogram which means that two thirds have not.

Had Mammogram	# Respondents
Yes	106
No	213
Refused	0
Total	319

68. When did you have your last mammogram?

Of those that did have a mammogram, 50% had one within the last year. Six percent (6%) haven't had one for over five years.

Last Mammogram	# Respondents
Never	1
Less than 1 year	54
More than a year but less than 2 years	22
More than two years but less than 5 years	24
More than 5 years	6
Don't know/not sure	1
Total	108

69. Have you ever had a clinical breast exam? A clinical breast exam is when a doctor, nurse, or other health professional feels the breasts for lumps.

Close to 70% have had a clinical breast exam.

Had Clinical Breast Exam	# Respondents
Yes	222
No	97
Refused	0
Total	319

70. When was your last breast exam by a health care professional?

Of those that did have a breast exam, close to 68% had it within a year.

Last Breast Exam	# Respondents
Never	0
Less than 1 year	150
More than a year but less than 2 years	34
More than two years but less than 5 years	30
More than 5 years	8
Total	222

71. Have you ever had a Pap test? A Pap test is a test for cancer of the cervix.

Ninety percent (90%) reported having a Pap test.

Had Pap Test	# Respondents
Yes	288
No	29
Don't know/unsure	1
Refused	0
Total	318

72.

73. When did you have your last Pap test?

Seventy-one percent (71%) had a Pap test within the past year.

Last Pap Test	# Respondents
Never	1
Less than 1 year	204
More than a year but less than 2 years	37
More than two years but less than 5 years	29
More than 5 years	17
Total	288

74. Have you ever gotten the results from your Pap test?

Close to 88% reported they received their results and only 12% reported they didn't.

Pap Results	# Respondents
Yes	252
No	35
Don't know/unsure	1
Total	288

75. Have you had a hysterectomy? A hysterectomy is the removal of the uterus or womb through surgery.

Roughly 7.5% reported having a hysterectomy.

Hysterectomy	# Respondents
Yes	24
No	294
Refused	0
Total	318

76. Have you ever had a PSA test? A Prostate-Specific Antigen test, also called a PSA test, is a blood test used to check men for prostate cancer.

Of the 199 males, less than 10% ever had a PSA test.

Had PSA Test	# Respondents
Yes	19
No	179
Don't know/unsure	1
Total	199

77. When was your last PSA test?

Of the 19 that reported having a PSA test, close to 58% had that test within the past year.

Last PSA Test	# Respondents
Never	0
Less than 1 year	11
More than a year but less than 2 years	1
More than two years but less than 5 years	6
More than 5 years	1
Total	19

78. Have you ever had a digital rectal exam? A digital rectal exam is an exam in which a doctor, nurse, or other health professional places a gloved finger into the rectum to feel the size, shape, and hardness of the prostate gland.

Eleven percent (11.6%) of male respondents reported having a digital rectal exam.

Had Digital Rectal Exam	# Respondents
Yes	23
No	176
Total	199

79. When was your last digital rectal exam?

Of the 23 that reportedly had a digital rectal exam, 22% had one within the past year, 52% reported having one more than 2 years ago but less than 5 years ago, and 26% reported more than 5 years.

Last Digital Rectal Exam	# Respondents
Never	0
Less than 1 year	5
More than a year but less than 2 years	1
More than two years but less than 5 years	11
More than 5 years	6
Refused	0
Total	23

80. A blood stool test is a test that may use a special kit at home to determine whether the stool contains blood. Have you ever had this test using a home kit? (select from list)

Less than 8% of respondents have ever used a home blood stool test.

Blood Stool Test	# Respondents
Yes	39
No	479
Don't know/unsure	1
Total	519

81. Has your doctor or nurse ever told you how to prevent venereal or sexually transmitted diseases? Sexually transmitted diseases include HIV or AIDS, chlamydia, genital herpes, syphilis, and gonorrhea.

Roughly half of respondents reported a doctor or nurse told them how to prevent STDs.

STD Information	# Respondents
Yes	264
No	251
Don't know/unsure	3
Refused	0
Total	518

82. Do you now have any health problem that requires you to use special equipment, such as a cane, a wheelchair, a special bed, oxygen tank, or a special telephone? Include occasional use or use in certain circumstances.

Slightly more than 3% reported having a health problem that required special equipment.

Special Equipment	# Respondents
Yes	17
No	501
Don't know/unsure	1
Total	519

83. In the past 12 months, were you injured by a fall? By injured we mean the fall caused you to limit your regular activities for at least a day or to go see a doctor. (select from list)

Slightly more than 10% reported an injury through a fall.

Fall Injury	# Respondents
Yes	53
No	463
Don't know/unsure	3
Total	519

84. By yourself, and without using any special equipment, how difficult is it for you to do the following?

The activities that were very difficult to do were stoop/bend/kneel and stand (2 hours).

Activity	Not at all difficult	Somewhat difficult	Very difficult	Do not do this activity	Don't know/not sure	Refused
Walk a quarter of a mile – about 3 city blocks?	440	39	23	16	1	0
Walk ten steps without resting?	490	18	9	1	0	0
Stand or be on your feet for about 2 hours?	415	64	33	7	0	0
Sit for about 2 hours?	422	60	18	18	0	0
Stoop, bend or kneel?	390	88	38	3	0	0
Reach up over your head?	479	27	11	1	0	0
Use your fingers to grasp or handle small objects?	472	31	15	0	0	0
Lift or carry something as heavy as 10 pounds?	470	29	17	0	0	0
Push or pull large objects like a living room chair?	448	46	21	3	0	0
Go out to things like shopping, movies, or sporting events?	460	22	8	28	1	0
Participate in social activities such as visiting friends, attending clubs and meetings, going to parties?	429	21	8	59	1	0
Do things to relax at home or for leisure like reading, watching TV, sewing, listening to music?	487	25	4	3	0	0

85. What condition or health problem causes you to have difficulty with any of the above activity(ies)?

The most frequently selected condition was other with 75, followed by back or neck problems (63), and knee problems (not arthritis) with 45.

Limiting Condition	# Responses
Vision/problem seeing	34
Hearing problem	9
Arthritis/rheumatism	26
Back or neck problem	63
Fracture, bone/joint injury	31
Heart problem	3
Stroke problem	1
Hypertension/high blood press.	11
Diabetes	15
Lung/breathing problems	6
Cancer	0
Birth defect	2
Senility	3
Depression/anxiety/emotional	8
Missing limbs (fingers, toes)	4
Kidney, bladder or renal	6
Circulation problems	13
Benign Tumors, Cysts	5
Fibromyalgia, lupus	5
Osteoporosis, tendinitis	10
Epilepsy, seizures	1
Multiple Sclerosis, MD	0
Polio (myelitis), paralysis	0
Parkinson's disease, tremors	1
Hernia	4
Ulcer	4
Varicose veins, hemorrhoids	9
Thyroid problems, gout	4
Knee problems (not arthritis)	45
Migraine headaches	6
Other	75

86. What do you consider to be the **most important** health problem or condition for Hispanics in Idaho?

By a large number, the most frequently cited health problem was diabetes. This includes all responses despite the position of mention (e.g. first mentioned, second mentioned).

Biggest Issue	# Responses
Diabetes	179
Costs (can't afford it/can't pay for medicines/insurance/dentist/lack money)	53
Alcohol, drugs, substance abuse/smoking	42
Communication/language barriers/translation/Spanish speaking doctors	35
Don't know/understand question	34
Obesity/overweight	34
Cancer	32
Lack of health insurance	27
Access to health care/delays/getting help/unequal access/service hours/lack of care/more clinics/more physicians	22
Hypertension	21
Flu	19
Afraid to seek care for lack of papers/lack of documentation	14
Dental	12
Heart disease/problems/conditions/attacks	11
Discrimination/racism/prejudice/treated as second class citizens	10
Eating habits/food/nutrition/poor diet/sugar	10
General awareness/ignorance about services/don't know where to go	10
Bad service/slow attention/lack of attention/long waits	9
High cholesterol	8
High blood pressure	6
Over exposure to pesticides/pesticides	6
Back problems	5
AIDS	4
Arthritis	4
Don't go to doctor	4
Stress	4
Venereal diseases/syphilis/TB	4
Vision	4
Allergy/sinus problems	3
Asthma	3
Physical activity (lack of exercise)	3
Isolation	3
Stroke	3
Transportation	3
Anemia	2
Cough	2
Depression	2
Fear of going to doctors	2
Sun exposure	2

Biggest Issue (continued)	# Responses
Bacteria	1
Blood problems	1
Bronchitis	1
Cold	1
Consulting doctor	1
Demanding equal care	1
Don't understand medical instructions	1
Don't want to care for you	1
Drivers license	1
Economy	1
Elderly	1
Epilepsy	1
Fatigue	1
Gastritis	1
Getting information	1
Heartburn	1
Heat	1
Hernia	1
Hospital/medical care	1
Incapacitated people	1
Incorrect medicines	1
Inadequate sleep	1
Insurance	1
Kidney problems	1
Medical necessity	1
Medication	1
Migraines	1
Not having mothers	1
Respiratory	1
Rheumatism	1
Rotavirus	1
Self-treatment	1
Skin	1
Stomach problems	1
Ulcers	1
Violence	1
Women don't speak out	1
Work accidents	1